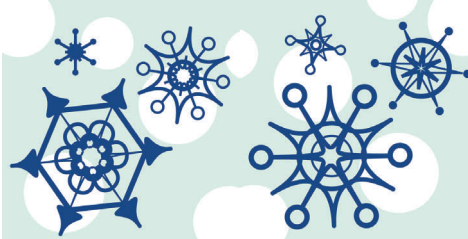


# FEBRUARY 2011



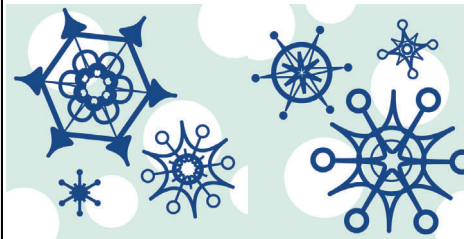
A Division of The Association For Community Living

## ***COMMUNITY RESOURCES***

**FOR PEOPLE WITH AUTISM**

*Creating Opportunities, Building Relationships, Improving Lives  
for children and adults with developmental disabilities since 1952*

[www.communityresourcesforautism.org](http://www.communityresourcesforautism.org)



### ***Staff***

***David Specht***  
Division Director  
Ext. 111

***Pamela Couchon***  
Autism Support Broker  
Ext. 124

***Jessica Dockendorff***  
Activities Coordinator  
Ext. 115

***Carla Doyle***  
Autism Support Broker  
Ext. 119

***Nancy Farnsworth***  
Educational Advocate  
Ext. 113

***Jason Litto***  
Family Support Manager  
Ext. 121

***Lynn Myers***  
Autism Specialist  
Ext. 114

***Amy Pinney***  
Adm. Coordinator  
Ext. 110

***Pam Powell***  
Adm. Assistant—  
Berkshire Office  
(413) 443-4780

***Betsy Rivera***  
Asst. Autism Specialist  
Ext. 112

***Megan Sherman***  
Family Support Manager  
Ext. 123

***Rhonda Ward***  
Autism Specialist  
Ext. 117

THE CRESCENTS AND THE GLAMOUR GIRLS ARE  
COLLABORATING ALONG WITH JIMMY MAZZ AND  
SPECIAL GUESTS \* \* RUTH CANEY \* \* RICHIE DOO WOP \*  
\* MICHAEL AND MOOSE  
TO PUT TOGETHER A SHOW TO BENEFIT:

**COMMUNITY RESOURCES FOR PEOPLE WITH AUTISM**

Saturday, February 19<sup>th</sup> - 8:00 p.m. till ???  
K of C Granby Road, Chicopee, MA

Tickets are \$15.00 per person and are available at:

Jennifer's Kitchen 574 Chicopee St Chicopee, MA  
The K of C 460 Granby Rd. Chicopee, MA 413-594-9848  
Or call Ted Hamel @ 413-262-0303  
Or Joe Pereria @ 413-330-1755

### **Please send us your pictures!**

We are looking for children's pictures to be featured in this year's conference brochure. If you would like your child's photo in our brochure, please send it digitally in an email to Karen Greaney at [greaneyk@theassn.org](mailto:greaneyk@theassn.org). Thanks!

*Conference registration  
form on page 8!*

# FEBRUARY 2011

Sunday	Monday	Tuesday	Wednesday	Thursday	Friday	Saturday
		1	2	3 Berkshire Open Swim	4 Berkshire Teen Group	5
6	7	8	9	10 Berkshire Open Swim	11 Berkshire Teen Group	12 Berkshire Sibshop
13	14 Valentines Day	15	16	17 Berkshire Open Swim	18 Berkshire Teen Group	19
20	21 President's Day  Office Closed  Berkshire Katate	22 Ice Cream Social 1 - 3PM  Berkshire Karate	23   Berkshire Karate	24   Berkshire Open Swim	25 Springfield Science Museum 10:30 AM  Berkshire Teen Group	26
27	28					

**January 2011**

S	M	T	W	Th	F	Sa
						1
2	3	4	5	6	7	8
9	10	11	12	13	14	15
16	17	18	19	20	21	22
23	24	25	26	27	28	29
30	31					

**March 2011**

S	M	T	W	Th	F	Sa
		1	2	3	4	5
6	7	8	9	10	11	12
13	14	15	16	17	18	19
20	21	22	23	24	25	26
27	28	29	30	31		

Notes:

[Go To Front Page](#)

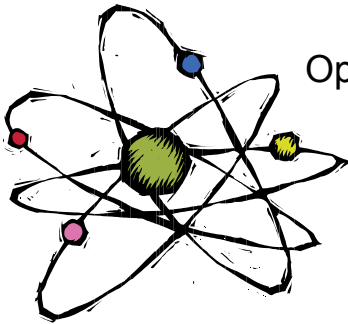
## COMMUNITY RESOURCES' EVENTS

### FEBRUARY SCHOOL VACATION ACTIVITIES!

#### A day at the Springfield Science Museum

Friday, February 25th  
10:30 AM

21 Edwards St.  
Springfield, MA



Optional Planetarium Show at 1 PM

Ticket pricing:  
Children: \$6:00  
Adults: \$8:50

Free for Springfield residents!



Please call or email to sign up!  
(413) 529-2428 or [dockendj@theassn.org](mailto:dockendj@theassn.org)

#### ICE CREAM SOCIAL

Join us for an afternoon of fun!



Tuesday, February 22nd  
1:00 - 3:00 PM

Eastworks Building  
Event Room (next to Jim's Burgers)  
116 Pleasant St.  
Easthampton, MA



Please RSVP by Friday, February 18th  
(413) 529-2428 or [dockendj@theassn.org](mailto:dockendj@theassn.org)

Go To  
Front Page

## BERKSHIRE EVENTS

### Activity Days!

Tuesday, Feb. 22nd, Wednesday, Feb. 23rd & Thursday, Feb. 24th

At Chin Bo Jok & Gymfest  
10 Lyman St., Pittsfield

For ages 5 & up, Siblings and friends are welcome, however space is limited so children with special needs will be given first priority. Activities include: Martial arts with *Nancy Salvatore of Chin Bo Jok*, Gymnastics with *Larry Moore of Gymfest*, *Social Skills and Relaxation with Allison Warnick and Rochelle Namais*, and *Language Games with Dana Oliva*

**Please bring a snack.**

We will have four rotating group sessions, lasting 30 minutes each with a 30 minute snack break. Children should wear comfortable clothes, that can be tucked in. (No shoes/socks allowed on mats.) Long hair should be pulled back.

Cost is \$45 per child. Please send remittance made out to Community Resources for People with Autism with the registration to CRPA Attn. Megan Sherman, 100 North St. Suite 322, Pittsfield, MA 01201 Any questions please call or email Megan at 413-443-4780 x. 15 or [shermanm@theassn.org](mailto:shermanm@theassn.org)

DEADLINE IS Friday, February 11, 2011

### Be A Rock Star Sibshop

Sponsored by Community Resources for People with Autism, United Cerebral Palsy of the Berkshires, and Berkshire County ARC. This is a fun and interactive discussion and activity based workshop for school age siblings of individuals with special needs.

**When:** Feb. 12, 2011

**Time:** 1:00 – 3:30

**Where:** Lenox Community Center  
65 Walker St.  
Lenox, MA 01240

For more information or to sign up please contact Megan Sherman at 413-443-4780 x15 or email at [shermanm@theassn.org](mailto:shermanm@theassn.org).

Go To  
Front Page

## OTHER COMMUNITY EVENTS

### **Understanding Behavior Basics: Tips and Strategies for dealing with challenging behaviors**

Wednesday, February 9, 2011

6:30-8:00 PM

Hampshire Family Support Center/Whole Children  
41 Russell Street, Hadley

Greg Bertsch, Ph.D. and Julie Tanguay, M.S.Ed. will discuss:

- ◆ Basic boundaries (how to understand them and hold them effectively without emotional entanglement)
- ◆ Reward and Punishment (when and how to use, tips to avoid pitfalls)
- ◆ Understanding causes of behaviors
- ◆ Balance between acceptance and change (picking your battles)
- ◆ Practical aspects of implementing behavior techniques
- ◆ Replacing an undesirable behavior with a more appropriate one.

Please let us know if you plan to attend. (413) 585-8010 X 205 (Donna)

Suggested fee of \$10 (if fee would prevent you from attending, please contact us.)

Fee is waived for Hampshire Family Support Center families

## **TRANSITION 101 High School to Adulthood**

This workshop addresses the effective use of the IEP and the Massachusetts Transition Planning Form for students who are ages 14 – 22. Individualized, person centered planning of curriculum and supports throughout high school leads to better post high school outcomes and opportunities in education, training, and/or employment for students with disabilities. Discussion includes age of majority, self determination and self advocacy, life skill development and preparing students to pursue as independent an adult life as possible.

**Date:** Thursday, February 10, 2011

**Location:** The United Arc Family Support Office  
110 Harrison Ave, Greenfield, MA

**Time:** 6:00 – 8:00 PM

**Register:** Call Felicia or Willow @ The United Arc 413-774-5558  
Or online: <http://fcsn.org/pti/workshops/home.php>

Federation workshops are free to parents and open to the public. We request advance registration. Light supper refreshments will be served.

**Go To  
Front Page**

A Division of The Association For Community Living

## ***COMMUNITY RESOURCES***

FOR PEOPLE WITH AUTISM

*Creating Opportunities, Building Relationships, Improving Lives  
for children and adults with developmental disabilities since 1952*

*www.communityresourcesforautism.org*

# **21ST ANNUAL CONFERENCE**

**Tuesday, April 12, 2011**

**The Log Cabin Banquet and Meetinghouse  
500 Easthampton Road ~ Holyoke, MA**

*Co-sponsored by:*

University of Massachusetts-Amherst ~ Department of Communication Disorders

Thanks to funds granted to Dr. Mary Andrianopoulos by the U.S. Department of Education

## **Conference Schedule**

8:00 am — 9:00 am Registration/Continental Breakfast

9:00 am — 9:15 am Welcome Address

9:15 am — 12:00 pm The Scerts® Model — The Basics  
Problem Behavior: Whose Problem Is It?  
*Barry Prizant, Ph.D.*

Dr. Prizant's session will focus on the basics of the SCERTS® Model for children who have or are at risk for social communicative difficulties. Problem behaviors and effective strategies will also be addressed.

10:30 am — 10:45 am Break

12:00 pm — 1:00 pm Lunch

1:00 pm — 3:30 pm Unstrange Minds: Remapping the World of Autism  
*Roy Richard Grinker, Ph.D.*

Dr. Grinker will speak about how individuals, communities, and businesses can create environments that help people with disabilities lead personally and economically fulfilling lives; and how changes in our society and our workplaces can enrich the lives of people with autism and the environments in which they live and work.

2:00 pm — 2:15 pm Break

3:30 pm Adjourn

**Go To  
Front Page**

## SPEAKER BIOS

### **Barry Prizant, Ph.D. CCC-SLP**

Dr. Barry Prizant is currently the Director of Childhood Communication Services and Adjunct Professor at the Center for the Study of Human Development, Brown University, Providence, Rhode Island.

Dr. Barry Prizant has close to 40 years experience as a clinical scholar, researcher and consultant to children and adults with ASD and related developmental disabilities and their families. He is an Adjunct Professor in the Center for the Study of Human Development at Brown University, and Director of Childhood Communication Services, a private practice. Barry is co-editor of the book: Autism Spectrum Disorders: A Developmental, Transactional Perspective (Wetherby & Prizant, 2000), and the two volume manual, The SCERTS Model: A Comprehensive Educational Approach For Children With ASD (Prizant, Wetherby, Rubin, Laurent & Rydell, 2006). He also has written more than 100 articles and chapters on autism spectrum disorders and pediatric communication disabilities, serves on the advisory board of five professional journals, and has presented more than 600 seminars nationally and internationally.

The SCERTS Model, an innovative approach for children and older individuals with ASD has been widely adopted across the US and in Europe, Japan and New Zealand. He consults for numerous school districts and agencies throughout the US and internationally. He also is the co-founder and facilitator of "Reflecting on the Journey", a weekend retreat for parents of children with autism now in its 15th year. Barry has received numerous awards, as well as widespread recognition for his clinical and scholarly work, including Fellowship in the American Speech-Language Hearing Association, and the 2005 Princeton University-Eden Foundation Career Award "for improving the quality of life for individuals with autism."

### **Roy Richard Grinker, Ph.D.**

"Human societies are composed of many different parts. Our success as a society depends on how well we deal with these differences." Cultural anthropologist Richard Grinker is widely recognized for his eloquent writing and speeches on diversity, especially on the diversity of minds. He is the world's leading authority presenting on autism for lay audiences, combining a mastery of the latest medical knowledge and a deep personal understanding of social and cultural context in accessible, non-technical language. He wrote the award-winning book Unstrange Minds: Remapping the World of Autism after his daughter was diagnosed with autism. He speaks about how individuals, communities, and businesses can create environments that help people with disabilities lead personally and economically fulfilling lives, and how changes in our society and our workplaces can enrich the lives of people with autism and the environments in which they live and work.

An engaging and moving speaker, Richard weaves into his accounts many inspiring stories of his own daughter's successes, and those of other people with autism in countries around the world. Richard is a gifted story teller and "a dynamic presence on camera" (CNN Presents).

Roy Richard Grinker is Professor of Anthropology, the Human Sciences, and International Affairs at George Washington University. His seemingly diverse research is unified by the theme of cultural response to marginalized populations. He has published in major newspapers, including the Wall Street Journal, the Washington Post, and New Scientist, and has made numerous broadcast appearances. Richard is the 2010 Anthropology in Media Award recipient presented by the American Anthropological Association. This award recognizes the person who was able to communicate anthropology to the general public.

## SPECIAL OPPORTUNITY FOR SCHOOL DISTRICTS

Community Resources For People With Autism's mission is to educate and build autism awareness within the community. This year we are offering three western MA school districts the opportunity to apply for five complimentary guest passes to our conference. The recipient districts will be chosen by a lottery system with preference given to districts that send a diversified group (i.e. SPED Director, general ed teacher, special ed teacher, paraprofessional, and ancillary specialists). Deadline for districts to enter for complimentary passes: March 21.

**Parents: Please share this information with your child's teachers, principal, and school district**

For more information and to download an application form, please visit our website:  
[www.communityresourcesforautism.org](http://www.communityresourcesforautism.org)

**Go To  
Front Page**

# REGISTRATION FORM

## Community Resources for People with Autism's 21ST ANNUAL CONFERENCE

Tuesday, April 12, 2011

9:00 am - 3:30 pm

(registration begins at 8:00 a.m.)

The Log Cabin Banquet & Meetinghouse ~ 500 Easthampton Road; Holyoke, MA 01040

Co-sponsored by:

University of Massachusetts-Amherst ~ Department of Communication Disorders

Thanks to funds granted to Dr. Mary Andrianopoulos by the U.S. Department of Education

### **Registration Fees (lunch included):**

Professionals: \$129 per individual (groups of 4 or more, \$119 each)

Families: \$59 per individual (groups of 2 or more, \$49 each)

Seating is limited - Register early! Please submit one form per registration. Form may be copied.

Scholarships are available for family members that are directly served by Community Resources.

**Please print clearly and complete every section of registration form.**

**If you require translation services, please describe and submit no later than March 20.**

**Please print clearly and complete every section of registration form.**

Name:

Address:

City, ST, Zip:

Phone:

Email:

Parent/Family Member

Teacher/School Personnel

Professional

**Please check box if you would like a vegetarian lunch**

**~ ~ REGISTRATION AND PAYMENT MUST BE RECEIVED BY APRIL 1, 2011 ~ ~**

(Refund Policy: Cancellations must be received by April 1, 2011)

Please make checks payable to:

Community Resources For People With Autism

116 Pleasant Street; Suite 366; Easthampton, MA 01027

Phone: 413-529-2428; Fax: 413-529-2567

Questions? Please contact Karen Greaney at ext. 118 or [greaneyk@theassn.org](mailto:greaneyk@theassn.org)

A Division of The Association For Community Living

**COMMUNITY RESOURCES**

FOR PEOPLE WITH AUTISM

Creating Opportunities, Building Relationships, Improving Lives  
for children and adults with developmental disabilities since 1952

[www.communityresourcesforautism.org](http://www.communityresourcesforautism.org)

**Go To  
Front Page**

## Berkshire Swim

Community Resources for People with Autism's Berkshire Autism Projects Committee has joined the Berkshire County ARC and Berkshire Family and Individual Resources to sponsor an hour of family swim.

Location:

Gladys Allen Brigham Community Center  
165 East St., Pittsfield

When:

6:00 pm – 7:00 pm  
Every Thursday evening (excluding holidays)  
September 30, 2010, through May 2011

***No cost to families!***

There will be lifeguards on duty;  
however, children will need to be accompanied by parents or care providers.

Please call the Gladys Allen Brigham Community Center at (413) 442-5174 by 3:00 pm on the day you plan to attend to ensure that they have enough lifeguards on duty.

If you have any questions, please call Megan Sherman at (413) 443-4780 x 15.



**Go To  
Front Page**

## *Parent & Teen Support Groups*

### **Asperger's Support Group Berkshires**

A structured and facilitated support group for young adults aged 18 to 30 with Asperger's syndrome.

3rd Sunday of every month  
February 20th  
3:30 - 4:30 PM  
Berkshire Mall Meeting Room

For more information or to sign up call Megan Sherman at 413-443-4780 x15 or email her at [shermanm@theassn.org](mailto:shermanm@theassn.org)

### **The Special Needs Support System**

This group is facilitated by Stephanie and Charles McCormick, parents of a special needs child.

Support and activities for families who have a child with special needs of any kind.

Meetings: 1st and Last Tuesday monthly  
6:00 PM to 7:30 PM  
Tabernacle Baptist Church  
(603 New Ludlow Road, Chicopee)

Group activities for children!

For more information and to register, please contact Stephanie:  
[specialchildren@yahoo.com](mailto:specialchildren@yahoo.com) or (413)693-5188.

### **Spanish Parent Support Group**

Join Community Resources staff member, Betsy Rivera, at a Spanish speaking Parent Support Group.

For more information & location, please contact:

Betsy Rivera  
(413) 529-2428 ext 112; [riverab@theassn.org](mailto:riverab@theassn.org)

### **Agawam Parent Support Group**

Facilitated by Angie Jordan, a mom of a child with autism.

Dates: 1st & 3rd Thursday of each month  
Time: 7:00 PM to 8:30 PM  
Location: Agawam Senior Center  
954 Main St., Agawam

No childcare—though children are welcome.  
For more information, contact: Angie Jordan  
(413) 786-3826; [jadey73@gmail.com](mailto:jadey73@gmail.com)

### **GRASP Western MA Support Group**

Anyone on the spectrum is invited, plus those in support roles if they clearly identify their role. You must register before you can attend. This allows your membership to remain as anonymous as you desire.

The 3rd Saturday 2:00 - 4:00 PM  
Westfield Athenaeum  
6 Elm St., Westfield

For more information, contact  
Michael Reinlagen  
[mreinlagen@gmail.com](mailto:mreinlagen@gmail.com)

### **Amherst Autism Parent Group**

3rd Saturday of each month  
September 2010 — May 2011  
11/20, 12/18, 1/15, 2/19, 3/19, 4/16, 5/21  
10:00 AM to Noon  
Chris & Laurel Peltier's  
691 South East St. ; Amherst

For more information or to RSVP, contact:  
Chris and Laurel Peltier  
(413) 230-3287 or [cnlpeltier@aol.com](mailto:cnlpeltier@aol.com)

## *Support Groups & Programs*

### **Autism Parental Support Group**

The Jericho community would like to welcome you to join our parental support group. The hope of this group is to support each other in every way as partners, parents, caregivers, and friends dealing with Autism, together.

Meetings: 3rd Wednesday monthly  
September - May  
6:30 PM to 8:00 PM  
Jericho Pastoral Center  
537 Northampton St., Holyoke, MA

Childcare is available, please call 413-538-7450 at least 2 days in advance if you will be bringing your child.

### **Social Thinking Groups with Kathleen Becker**

Everyday Heroes, Social Detectives, Social Thinking & Skills—are just a few of the programs offered! All of the listed groups have a focus on social cognitive development as well as social skills. There is also time for practicing these skills via play and conversational activities. All groups are led by Kathleen Becker, a speech/language therapist specializing in social cognition and skill development.

Contact Kathleen at (413) 320-3408 or [kmbecker42@gmail.com](mailto:kmbecker42@gmail.com) or [www.socialthinkingandmore.com](http://www.socialthinkingandmore.com)

### **Jewish Community Center Special Needs Programming**

Many programs and classes offered for children with special needs. Check out their current offerings at

[www.springfieldjcc.org](http://www.springfieldjcc.org)

### **Unified Sports Program**

For information about the different sports and activities offered by Unified Sports Program, visit

[www.unifiedsportsprogram.com](http://www.unifiedsportsprogram.com)

### **All Out Adventures**

Our mission is to promote health, community and independence for people with disabilities and their family and friends through outdoor recreation. Call for summer schedule, more information and to register at (413) 527-8980; or

[www.alloutadventures.org](http://www.alloutadventures.org).

**NEW  
GROUP!**

### **Autism Family Support Group of Southern Berkshire**

Join our group to discuss how to navigate life with someone diagnosed with Autism. Learn from others and share your own experience.

Meetings: 3rd Thursday monthly

Community Health Programs  
Family Services (Blue Building)  
442 Stockbridge Rd.  
Great Barrington, MA

For more information, contact  
Luci Leonard at 413-644-0104 x1156

**Go To  
Front Page**

## *Building Autistic Community Adult Support Groups*

### **Support Groups for Adults**

The adults with autism support group is a place to discuss personal and emotional issues both pertaining to the autism spectrum and otherwise. A diagnosis is not required to attend, and one support person may attend along with an adult so long as he or she agrees to represent the person in a support capacity more than an active participant in discussion.

Easthampton Meetings: 2nd Monday monthly  
6:30 PM to 8:00 PM

Community Resources for People with Autism  
116 Pleasant St., Ste. 366, Easthampton, MA

Westfield Meetings: 3rd Saturday Monthly  
2:00 - 4:00 PM

Westfield Athenaeum library  
6 Elm St., Westfield, MA

Contact Michael Reinhagen at  
MReinhagen@gmail.com

### **Autistic/NT Mixed Discussion**

Designed to bring together persons curious about the autism spectrum and adults with autism looking to advocate for themselves, the mixed discussion group provides an outlet to provide answers to questions and concerns about autism and the autistic community.

Meets 3rd Monday Monthly  
6:30 - 8:30 PM

Community Resources  
116 Pleasant St., Ste. 366  
Easthampton, MA

Contact Michael Reinhagen  
MReinhagen@gmail.com

### **Discussion Group for Adults with Autism**

Rather than being a support group, the discussion group facilitates open discussion about topics of interest to participants. Unlike the mixed discussion group, attendance is limited to persons who identify themselves as being on the autism spectrum and does not focus on autistic or life issues. E-mail director Michael Reinhagen at MReinhagen@gmail.com if you have a potential topic you would like to discuss.

Meets 4th Thursday Monthly  
6:30 - 8:30 PM

Community Resources  
116 Pleasant St., Ste. 366  
Easthampton, MA

*If you have any questions, comments or concerns about Building Autistic Community, its services or topics you would like to see it cover in the future, contact Michael Reinhagen via e-mail: MReinhagen@gmail.com*

**Go To  
Front Page**

### ***Bowling League***

A bowling league for children with disabilities and their siblings.

When: Every other Saturday

Cost: \$15.50 per person—which includes shoe rental and 3 strings of bowling

Location: Agawam Bowl; 359 Walnut St. Ext., Agawam

For more information, contact Angie Jordan, (413) 330-6376 or [jadey73@gmail.com](mailto:jadey73@gmail.com)

### ***Yoga Classes***

Yoga classes for children with an autism spectrum disorder and sensory issues.  
Siblings are welcome, too!

When: Monthly—beginning Friday, September 24; 6:30 PM — 7:30 PM

Cost: \$15.00 per person

Location: Fitness First; Feeding Hills

For more information, contact Angie Jordan, (413) 330-6376 or [jadey73@gmail.com](mailto:jadey73@gmail.com)

### ***Update Your Info!***

In an effort to make sure we are operating as efficiently as possible, give us a call and update your contact information. The majority of our communications are now happening through email—so, if we don't have your email address, you won't receive the most current information and might miss out on important events!

Call (413) 529-2428, or email [info@communityresourcesforautism.org](mailto:info@communityresourcesforautism.org)

### ***Do You Have Something To Share?***

Community Resources would love to hear your story!

- ◆ If you have a story you'd like to see featured in our newsletter, we'd love to hear it!
- ◆ If you would like to advertise a workshop, research study, community activity, or other information, let us know!

Please contact Jess Dockendorff at (413) 529-2428 or [dockendj@theasn.org](mailto:dockendj@theasn.org)

**Go To  
Front Page**