

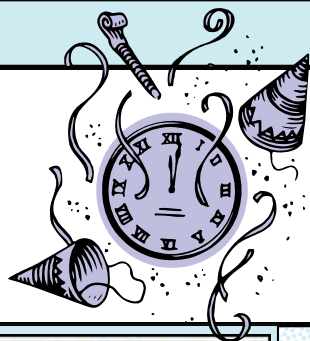
# JANUARY 2012

A Program of The Association For Community Living

## COMMUNITY RESOURCES

FOR PEOPLE WITH AUTISM

*Serving individuals with autism and  
their families since 1989*



### Staff

**Carrie McGee**

Interim Director  
Ext. 111

**Pamela Couchon**

Autism Support Broker  
Ext. 124

**Jessica Dockendorff**

Activities Coordinator  
Ext. 115

**Carla Doyle**

Autism Support Broker  
Ext. 119

**Nancy Farnsworth**

Educational Advocate  
Ext. 113

**Jason Litto**

Family Support Manager  
Ext. 121

**Lynn Myers**

Autism Specialist  
Ext. 114

**Amy Pinney**

Adm. Coordinator  
Ext. 110

**Pam Powell**

Adm. Assistant—  
Berkshire Office  
(413) 443-4780

**Betsy Rivera**

Asst. Autism Specialist  
Ext. 112

**Megan Sherman**

Family Support Manager  
Ext. 123

**Rhonda Ward**

Autism Specialist  
Ext. 117

### Annual Holiday Party Recap

On Friday, December 9th, Community Resources hosted its annual holiday party at the Eastworks building in Easthampton. More than 90 children, parents and friends gathered and enjoyed a potluck dinner, a magical show by Ed the Wizard, snowflake crafts, and a visit from Santa.

We would like to thank all the families for their generous contributions to the potluck and for bringing good cheer to the party! A good time was had by all, and we are already looking forward to next year's party!

We wish everyone a very happy and healthy New Year!



Ed the Wizard prepares to entertain



Santa is given a very warm welcome!

# January 2012

Sunday	Monday	Tuesday	Wednesday	Thursday	Friday	Saturday
1	2 New Year's Day Observed Office Closed	3	4	5	6	7
8	9	10	11	12	13	14
15	16 Martin Luther King Day Office Closed	17	18	19	20	21 Old School Profes- sional Wrestling Fundraiser 7PM
22	23	24	25	26	27	28 Stepping Out for Autism Fundraiser 6 - 11PM The Log Cabin
29	30	31				

**Go To  
Front Page**

## COMMUNITY RESOURCES' EVENTS

### ***Asperger's 101***

Speaker: Jason Litto

This workshop is intended to introduce families and caretakers to Asperger's Syndrome. Characteristics and strategies to help individuals are discussed, as well as some of the social difficulties that people with Asperger's experience. The workshop will also provide an opportunity to meet other parents of children and young adults with Asperger's.

We encourage friends, family members, and support persons to attend this valuable workshop.

#### ***Date and Time:***

Thursday, February 2, 2012; 6:00 p.m. to 8:00 p.m.

#### ***Location:***

Holyoke Community College  
Kittredge Center, Room 302  
303 Homestead Ave.; Holyoke, MA

***R.S.V.P. by Monday, January 30th to: (413) 529-2428***



***Free Swim Thursday's:***

***When:*** Thursday's starting September 29

***Where:*** Gladys Allen Brigham Community Center

***Time:*** 6 - 7 P.M.

***Phone number:*** 413-442-5174

***All participants must call in by 3:00 P.M. the day of, with the number of people in their group. So they will have enough lifeguards.***

Go To  
Front Page



*Join Us For Our  
Third Annual Fundraiser*  
**Stepping Out For Autism**

**Saturday,  
January 28, 2012**

**6:00 p.m. to 11 p.m. at The Log Cabin**  
500 Easthampton Road, Holyoke, MA

- Butlered Hors d'oeuvres • Sit-Down Dinner
- Dancing • Music by Union Jack Band
- Raffle Drawing • Live & Silent Auction

**Early Bird Ticket:**

**\$45 per person (\$400 for tables of 10) by Dec. 16, 2011**

**Tickets: \$50 per person (\$450 for tables of 10) by Jan. 13, 2012**  
**RSVP to 413-529-2428**

(Snow Date: Friday, February 3, 2012)

**If you are unable to attend, please make a donation!**

Please make checks payable to:

Community Resources For People With Autism

Or Donate Online at: [www.communityresourcesforautism.org](http://www.communityresourcesforautism.org)

A Program of The Association For Community Living

***COMMUNITY RESOURCES***

**FOR PEOPLE WITH AUTISM**

Community Resources for People with Autism  
16 Pleasant St., Suite 366, Easthampton, MA 01027  
Phone: 413-529-2428 / Fax: 413-529-2567

*Serving individuals with autism and  
their families since 1989*

**Go To  
Front Page**

## Attention Pro-Wrestling Fans!

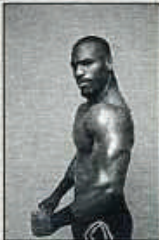

"The Way Wrestling Was Promotion" (T3WP) is sponsoring a fun evening of Old School Professional Wrestling on Saturday, January 21, 2012 from 7:00 – 10:00 pm at the World War II Club, 50 Conz St., Northampton. Community Resources will receive some of the proceeds from this family friendly event, so we encourage you to attend. Tickets are \$10.00 for adults and \$5.00 for children aged 10 and under.

**T3WP - THE WAY WRESTLING WAS PROMOTION**  
PRESENTS

**OLD-SCHOOL  
PROFESSIONAL WRESTLING**

SATURDAY, JANUARY 21, 2012  
THE WORLD WAR II CLUB  
50 CONZ STREET, NORTHAMPTON, MA

**\*\* NUMBER ONE CONTENDER MATCH \*\***

BOBBY OCEAN  VS  "THE HAMMER"  
JUSTIN TUNIS

Also appearing: A. J. Cruise, Dr. Reginald Heresy, Jonny Idol,  
Isaiah Rex, Frankie Rhoda, and more!

**- AUSTRALIAN TAG TEAM MATCHES -**

**- LADIES MATCH -**

**- FOUR MORE MATCHES -**

CARD SUBJECT TO CHANGE

**SHOW STARTS AT 7 PM DOORS OPEN AT 6:15 PM**

Tickets: \$10 for Adults, \$5 for Kids Under 10.

Purchase your tickets in advance from Cindy at  
ORCHARD VARIETY, 152 MAIN STREET, INDIAN ORCHARD, MA  
or at  
THE WORLD WAR II CLUB, 50 CONZ STREET, NORTHAMPTON, MA

Go To  
Front Page

# Sensory 'Sensitive' Cinema



from *rave motion pictures*

## What this means for you:

- Auditorium lights left on
- Auditorium sound on low levels
- G, PG & PG-13 features
- Tickets \$5.00

## We Bought A Zoo

Sunday January 8th  
10:00AM

Ravecinemas West Springfield 733-5134

## Karate at The Springfield Jewish Community Center

1160 Dickinson Street; Springfield, MA

Karate instruction mixed with games to help kids learn teamwork and to just have fun!  
Attire for the class is socks, comfortable sweatpants, and a t-shirt.



\*\*Instructor, Rick Downey, requests parents be present at all classes\*\*

Begins January 8th and runs for 8 weeks

- ◆ 2:00—2:45pm (extra supports provided)
- ◆ 3:00—3:45pm

Please call the JCC to register for class:  
413-739-4715

Go To  
Front Page

## RESOURCES & INFORMATION

### **Inclusive Overnight Camp Opportunity:**

#### **Zohar- Supported Inclusion for Students with Special Needs Overnight Experiences**

Zohar program is designed for Jewish adolescents with developmental challenges. Participants are fully integrated into camp life and participate in all camp-wide programs with support and supervision. Register for one-week sessions, up to six weeks total.

**Contact:** [617-558-6528](tel:617-558-6528), [info@kingswood.org](mailto:info@kingswood.org), or [bostonjcc.org/kingswood](http://bostonjcc.org/kingswood)



**Pediatric Development Center is proud to announce that their Specialty Service Provider Program has been renamed.**

As of January 1, 2012, the former SSP program will be Berkshire Early Autism Resources. This will not impact or change any of the services that are provided to the families.

If you have any questions, please contact:

Kathy Wilson, Program Manager at 499-4537 x 103 or

Pat Pelligrino, Program Director at 499-4537 x 106

### **Looking for young adult women with high functioning autism or Asperger's to start a social group**

Parents of a young adult woman are looking to help her start a group for women age 18-24 who are interested in getting together for weekly social events. General Amherst/Hadley/Northampton area. If you are interested, please contact Charmagne at 413-253-2145 or 256-1508

### **Join AANE's new Grandparent Online Google Support Group**

This Google group will provide a forum for grandparents to share information, ask questions, and offer support to each other via email.

To be part of AANE's Grandparent Google group you need to:

- Be a grandparent of an individual with Asperger Syndrome or a related condition such as High Functioning Autism, PDD-NOS, or NLD.

Be a current [member of AANE](#). (There is no charge to participate in the Grandparent Google group.)

If you want more information or would like to join, please email or call Marcia Robinson at 617 393-3824, ext. 29. She can answer your questions and assist you in signing up.

**Go To  
Front Page**

### *Yoga Classes*

Yoga classes for children with an autism spectrum disorder and sensory issues.  
Siblings are welcome, too!

When: 3rd Friday Monthly; 6:00 PM — 7:00 PM

Cost: \$15.00 per person

Location: Fitness First; Feeding Hills

Participants must RSVP by the Friday one week before the class! The instructor, Maria, has mats, blocks, and bands. Please wear appropriate gym attire and bring a water bottle.

For more information, contact Angie Jordan, (413) 330-6376 or [jadey73@gmail.com](mailto:jadey73@gmail.com)

### *Bowling*

When: Saturday, December 10th; 1:00 to 2:30pm

Cost: \$8.25 per person. This includes two games and shoe rental

Location: AMF Lanes on Burnett Rd. in Chicopee, MA

For more information, contact Angie Jordan, (413) 330-6376 or [jadey73@gmail.com](mailto:jadey73@gmail.com)

### *Karate*

When: Every Saturday from 10:00 to 11:00am

Cost: \$25.00 per person per month

Location: Inner Circle; 313 Springfield St. in Agawam, MA

Anyone interested in trying karate may attend a class for free. For more information, contact Angie Jordan, (413) 330-6376 or [jadey73@gmail.com](mailto:jadey73@gmail.com)

### *Drum Lessons*

When: Mon - Fri 5:30 - 6:15 PM & 6:30 - 7:15 PM; Weekends by appointment

Cost: Donations appreciated. Please make donations to Katrinkets

Location: Feeding Hills, MA

Anyone interested in taking drum lessons, please contact the instructor, Aaron Bassette at (413) 221-4750 or contact Angie Jordan, (413) 330-6376 or [jadey73@gmail.com](mailto:jadey73@gmail.com). Students must bring their own drum pads and sticks.

### **Social Thinking Groups with Kathleen Becker**

Everyday Heroes, Social Detectives, Social Thinking & Skills—are just a few of the programs offered! All of the listed groups have a focus on social cognitive development as well as social skills. There is also time for practicing these skills via play and conversational activities. All groups are led by Kathleen Becker, a speech/language therapist specializing social cognition and skill development.

Contact Kathleen: (413) 320-3408 or email her at [kmbecker42@gmail.com](mailto:kmbecker42@gmail.com)

[www.socialplaythinkingandmore.com](http://www.socialplaythinkingandmore.com)

**Go To  
Front Page**

## *Parent & Teen Support Groups*

### **Asperger's Support Group Berkshires**

A structured and facilitated support group for individuals with Asperger's syndrome.

**Sunday, January 15**

1 - 3 PM for adults

3:30 - 4:30 PM for young adults  
(age 18- 30)

Berkshire Mall Meeting Room

For more information or to sign up call Megan Sherman: 413-443-4780 x15 or email her at [shermanm@theassn.org](mailto:shermanm@theassn.org)

### **The Special Needs Support System**

This group is facilitated by Stephanie and Charles McCormick, parents of a special needs child.

Support and activities for families who have a child with special needs of any kind.

Meetings: 1st and Last Tuesday monthly  
6:00 PM to 7:30 PM

Tabernacle Baptist Church  
(603 New Ludlow Road, Chicopee)

Group activities for children!

For more information and to register, please contact Stephanie:  
[specialchildren@yahoo.com](mailto:specialchildren@yahoo.com) or (413)693-5188.

### **Spanish Parent Support Group**

Join Community Resources' Spanish speaking Parent Support Group. For more information, please contact Besty Rivera at:

Friday, January 27, 2012; 11AM—1:30PM  
SC@N 360, Springfield, MA

(413) 529-2428 ext 112; [riverab@theassn.org](mailto:riverab@theassn.org)

### **Westfield Lunchtime Support Group**

Support Group for Parents/Caregivers of children with mental health challenges.

Meetings: 2nd Monday monthly  
12:15 - 1:30 PM

Carson Center conference room  
20 Broad St.; Westfield, MA

For further information, contact Jan Lamberg  
413-536-2401 x3002; 800-894-2401 x3002

### **GRASP Western MA Support Group**

Anyone on the spectrum is invited, plus those in support roles if they clearly identify their role. You must register before you can attend. This allows your membership to remain as anonymous as you desire.

The 3rd Saturday monthly 2:00 - 4:00 PM  
Westfield Athenaeum  
6 Elm St., Westfield

For more information, contact  
Michael Reinlagen  
[mreinlagen@gmail.com](mailto:mreinlagen@gmail.com)

### **Parents Together**

The Amherst Family Center  
Thursdays from 9:30 - 11AM starting 10/6/11

We are a community of parents - some with learning differences - who support each other on the parenting journey.

A Parent Educator can also meet with you individually. For registration, please contact Kris Larson: 413-834-3344 or [krislarson@unitedarc.org](mailto:krislarson@unitedarc.org)

**Go To  
Front Page**

## *Support Groups & Programs*

### **Agawam Parent Support Group**

Facilitated by Angie Jordan, a mom of a child with autism.

Dates: 1st & 3rd Thursday of each month

Time: 7:00 PM to 8:30 PM

Location: Agawam Senior Center  
954 Main St., Agawam

No childcare—though children are welcome. For more information, contact: Angie Jordan (413) 786-3826; jadey73@gmail.com

### **Pittsfield Parent Support Group**

**Wednesday, January 18**

6 - 8PM

UCP of the Berkshires  
208 West St  
Pittsfield, MA

We offer an open, supportive environment for parents and caregivers of individuals with autism of any age for networking, information, and support.

Open to all; childcare will be provided on site. RSVP required.

Please RSVP to Pam Powell by January 12th at (413) 443-4780 x15 or collaboration4autism@yahoo.com

### **Amherst Autism Parent Group**

#### **Call for Next Meeting Details**

10:00 AM to Noon

Chris & Laurel Peltier's  
691 South East St., Amherst, MA

#### **Family holiday gluten/casein free baking party!**

For more information or to RSVP, contact: Chris and Laurel Peltier  
(413) 230-3287 or cnlpeltier@aol.com

### **Northern Berkshire Family Support Group**

**Thursday, January 12**

6 - 8PM

UCP

26 Union St., Suite 1  
North Adams

For more information or to RSVP, contact: Megan Sherman (413) 443-4780 x15 or shermanm@theassn.org

### **Facilitated Support Group for Parents & Caregivers of Children with Developmental Disabilities**

Jericho  
Alleluia House  
537 Northampton St.; Holyoke, MA

Second Wednesday monthly; 6:30 - 8 PM

Childcare is available, please call one week in advance to register your child.

**For info call: 413-538-7450**

**Go To  
Front Page**